

PAB908Bo01

Polyclonal Antibody to Aggrecan (AGC)

Organism Species: *Bos taurus*; Bovine (Cattle)

Instruction manual

FOR IN VITRO USE AND RESEARCH USE ONLY

NOT FOR USE IN CLINICAL DIAGNOSTIC PROCEDURES

9th Edition (Revised in Jul, 2013)

[PRODUCT INFORMATION]

Immunogen: AGC, Cattle

Clonality: Polyclonal

Host: Rabbit

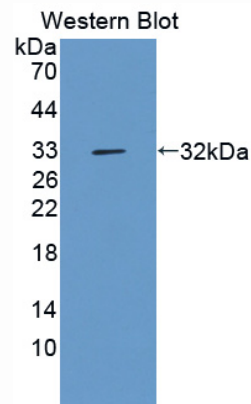
Immunoglobulin Type: IgG

Purification: Affinity Chromatography.

Applications: WB, ICC, IHC-P, IHC-F, ELISA

Concentration: 200µg/mL

UOM: 100µg



Sample: Recombinant AGC, Cattle

[IMMUNOGEN INFORMATION]

Immunogen: Recombinant AGC (Glu2066~Arg2316) expressed in *E.coli*.

Accession No.: RPB908Bo01

Sequence: The target protein is fused with two N-terminal Tags, His-tag and T7-tag and its sequence is listed below.

MGSSHHHHHH SSGLVPRGSH MASMTGGQQM GRGSEF- EARLE IESSSPVHSG
EESQTADTAT SPTDASIPAS AGGTDDSEAT TTDQKLCEEG WTKFQGH CYR HFPDRATWVD
AESQCRKQQS HLSSIVTPEE QEFVNNNAQD YQWIGLNDKT IEGDFRWSDG
HSLQFENWRP NQPDNFFATG EDCVVMIWHE KGEWNDVPCN YQLPFTCKKG
TVACGEPPVV EHARIFGQKK DRYEINALVR YQCTEGFIQG HVPTIRCQPS GHWEPRITC
TDPATYKRRL QKRSSR

[ANTIBODY SPECIFICITY]

The antibody is a rabbit polyclonal antibody raised against AGC. It has been selected for its ability to recognize AGC in immunohistochemical staining and western blotting.

[APPLICATIONS]

Western blotting: 1:50-400

Immunocytochemistry in formalin fixed cells: 1:50-500

Immunohistochemistry in formalin fixed frozen section: 1:50-500

Immunohistochemistry in paraffin section: 1:10-100

Enzyme-linked Immunosorbent Assay: 1:100-200

Optimal working dilutions must be determined by end user.

[CONTENTS]

Form & Buffer: Supplied as solution form in PBS, pH7.4, containing 0.02% NaN₃, 50% glycerol.

[QUALITY CONTROL]

Content: The quality control contains recombinant AGC (Glu2066~Arg2316) disposed in loading buffer.

Usage: 10uL per well when 3,3'-Diaminobenzidine(DAB) as the substrate.

5uL per well when used in enhanced chemiluminescent (ECL).

Note: The quality control is specifically manufactured as the positive control. Not used for other purposes.

Loading Buffer: 100mM Tris(pH8.8), 2% SDS, 200mM NaCl, 50% glycerol, BPB 0.01%, NaN₃ 0.02%.

[STORAGE]

Store at 4°C for frequent use. Stored at -20°C to -80°C in a manual defrost freezer for one year without detectable loss of activity. Avoid repeated freeze-thaw cycles.